

Multi-Viewer Software

R&S® VENICE View

Software

User Guide







User Guide Version 1.1 for the VENICE View Software Version 1.1

Copyright © 2015 by Rohde & Schwarz DVS GmbH, Hanover. All rights reserved.

The manuals as well as the soft- and/or hardware described here and all their constituent parts are protected by copyright. Without the express permission of Rohde & Schwarz DVS GmbH any form of use which goes beyond the narrow bounds prescribed by copyright legislation is prohibited and liable to prosecution.

This particularly applies to duplication, copying, translation, processing, evaluation, publishing, and storing and/or processing in an electronic system.

Specifications and data may change without notice. We offer no guarantee that this documentation is correct and/or complete. In no event shall Rohde & Schwarz DVS GmbH be liable for any damages whatsoever (including without limitation any special, indirect or consequential damages, and damages resulting from loss of use, data or profits, or business interruption) arising out of the use of or inability to use the hardware, software and/or manual materials.

Those parts of this documentation that describe optional software or hardware features usually contain a corresponding note. Anyway, a lack of this note does not mean any commitment from Rohde & Schwarz DVS GmbH.

DVS and Spycer are registered trademarks of Rohde & Schwarz DVS GmbH. Apple, Mac and Mac OS are trademarks of Apple Inc., registered in the U.S. and other countries. Linux is a registered trademark of Linus Torvalds. Microsoft and Windows are registered trademarks or trademarks of Microsoft Corporation in the United States and/or other countries. NVIDIA is a registered trademark of NVIDIA Corporation in the U.S. and/or other countries.

Any other product names mentioned in this documentation may be trademarks or registered trademarks of their respective owners and as such are subject to the usual statutory provisions.



Headquarters:

Rohde & Schwarz DVS GmbH
Krepenstr. 8
30165 Hannover
GERMANY

Phone: +49-511-67807-0
Fax: +49-511-630070
E-mail: info.dvs@rohde-schwarz.com
Internet: <http://www.dvs.de>

Support:

Phone: +49-511-67807-125
Fax: +49-511-371985
E-mail: service.dvs@rohde-schwarz.com



Contents

1	Introduction	1-1
	1.1 Target Group	1-2
	1.2 Conventions Used in this User Guide	1-2
	1.3 System Requirements	1-5
	1.4 Important Notes	1-6
2	Basics	2-1
	2.1 Installation	2-2
	2.1.1 Notes about Spycer	2-2
	2.1.2 Installing under Linux	2-3
	2.1.3 Installing under Mac OS	2-3
	2.1.4 Installing under Windows	2-4
	2.2 Starting the Software	2-5
	2.2.1 Starting the Software under Linux	2-5
	2.2.2 Starting the Software under Mac OS	2-5
	2.2.3 Starting the Software under Windows	2-6
	2.3 Overview	2-7
	2.3.1 Overview of the Main Window	2-7
	2.3.2 Overview of a Channel Widget	2-8
	2.4 Exiting the Program	2-10
3	Usage	3-1
	3.1 General Usage	3-2
	3.2 Configuring the Display	3-4
	3.2.1 The Configuration Dialog Window	3-4
	3.2.2 Configuration Options: Auto	3-5
	3.2.3 Configuration Options: Customized	3-5
	3.3 Keyboard Shortcuts	3-10
I	Index	I-1



Introduction

This document describes how to use the R&S®VENICE View software delivered with R&S®VENICE, the ingest and production server manufactured by Rohde & Schwarz DVS GmbH (in short 'R&S DVS').

VENICE is a highly flexible server system for capturing and playing out audio and video content. Especially designed for highly optimized, file-based broadcast workflows, it provides multiple independent channels and supports natively the most common compressed formats. With VENICE you can easily capture live content, e.g. from cameras directly, and access data for play-out operations – if required both at the same time and in the format that suits your workflow best. During each operation you can control an externally connected device via RS-422 to act as a player or recorder, either in a manual or autoedit operation mode.

The VENICE View software is designed to work as a multi viewer to give you an overall view of the connected channels of all VENICE servers in the network that can be found by R&S®Spycer. It is a comprehensive and intuitive application that can be used on any network client (Linux, Mac, Windows) connected to the server. VENICE View can be run independently from the R&S®VENICE software but the latest Spycer application by R&S DVS must be installed for data management.

To exploit all potentialities the hardware of VENICE offers, it is recommended to use both, the VENICE View software and the VENICE software. It is also possible to run several instances of the softwares in parallel, for example, to have them side by side on the desktop.

This user guide informs you about the general handling of the VENICE View software as well as its options and functionalities.



1.1 Target Group

To use this user guide and the R&S DVS software correctly you should have experience in handling PCs and working with the respective operating system where the software is installed. If you want to use the software and the R&S DVS system to its full potential, you should also have knowledge in the field of digital video in general.

When working on the VENICE server system, you should be familiar with how to operate the hardware of a video/server system.

Furthermore, to use the R&S DVS system in connection with other equipment, e.g. a VTR, you should know how to operate this equipment.

1.2 Conventions Used in this User Guide

The following typographical conventions will be used in this documentation:

1. Texts preceded by this symbol describe activities that you must perform in the order indicated.
 - Texts preceded by this symbol are parts of a list.
 - Texts preceded by this symbol are parts of a list of a second level.
 - Texts preceded by this symbol are parts of a requirements list.
 - ▶ Texts preceded by this symbol describe the result of an action.



Texts preceded by this symbol are general notes intended to facilitate work and help avoid errors.

NOTICE

Cause of Risk

Indicates the possibility of incorrect operation which can result in damage to the product. You must pay particular attention to text that follows this symbol to avoid errors.

Preventive measures to avoid risks of damage to the system.


CAUTION


Source of Danger

Indicates a hazardous situation which, if not avoided, could result in minor or moderate injury.

Preventive measures to avoid minor or moderate injury.



 WARNING	Source of Danger Indicates a hazardous situation which, if not avoided, can result in death or serious injury. Preventive measures to avoid death or serious injury.
--	--

 DANGER	Source of Danger Indicates a hazardous situation which, if not avoided, will result in death or serious injury. Preventive measures to avoid death or serious injury.
---	---

- “ ” Texts enclosed by quotation marks are references to other manuals, guides, chapters, or sections.
- ‘ ’ Texts enclosed by single quotation marks are references to labelings given by the author and quoted labelings.

'Window'	Text in bold with single quotation marks indicates a window name
BUTTON	Text in small caps and bold indicates a push button
<i>Group/Menu</i>	Text in italic and bold indicates either a group name, menu name or options in a menu list
<i>Menu > Option</i>	In the specified group or menu select the stated item
Item	Text in bold only stands for other labeled items of a user interface
<i>Directory/File</i>	Directory structure or file
Entry	Indicates parameters or variables, as well as selections or entries made in a program; it may also indicate a command (e.g. at a command line), a syntax or contents of a file/output
[Key]	An individual key or a key combination on a keyboard

Keyboard Shortcuts

To perform options or procedures with the keyboard often requires a simultaneous pressing of two keys.

Example:



[Ctrl + F1]	If this is given, hold down the [Ctrl] key and press simultaneously the [F1] key.
[Alt, F1]	If this is given, press the [Alt] key first and then the key [F1] successively.

Screenshots

The screenshots shown in this documentation may be taken on various operating systems as well as from pre-release versions of the software. Their appearance may differ from your environment. However, they should contain all relevant elements that you need to understand the described actions.

Command Descriptions

Command descriptions may additionally use the following notation:

# . . .	Has to be numerical
< . . . >	Variable; this term has to be replaced by an appropriate value
[. . .]	Optional part; you don't have to specify it
<xxx>=y	Default; if you don't specify <xxx>, it will be set to the default value y
{ . . . }	Selection; select one of the given alternatives, which are separated by commas



Please do not include the special characters from the listing above in your command line when entering commands.

1.3 System Requirements

When installing the VENICE View software on a client system, please observe the following system requirements:

Supported Hardware

These are the minimum hardware requirements that the computer system has to meet if you want to use the program on a client system:

- 2 GHz multi-core processor
- 2 GB RAM
- 250 MB free space on system disk
- Network card to communicate with the VENICE server (at least 100 Mbit/s)
- NVIDIA graphics card



R&S DVS tested the software with the above mentioned types of graphics cards. Others may work as well, but not necessarily.

Supported Operating Systems

The program can be executed on the following operating systems:



Be sure that you have installed the latest system updates and/or service packs for your system, otherwise you may encounter software and/or hardware problems.

- Linux (Red Hat Enterprise 5.3, 6.2/6.4 (64 bit))



R&S DVS tested the software with the above mentioned Linux distribution. Others may work as well, but not necessarily.

- Mac OS X (10.7, 10.8, 10.9, 10.10)
- Windows 7/8

Other Requirements

To work with the VENICE View software, the Spycer application by R&S DVS must be installed as well.



You can download the newest version of the Spycer application from its internet site (www.spycer.net or www.spycer.de).

Furthermore, if the VENICE View software is installed on a remote system, the Spycer application running there should be fully licensed. With



this, the data streamed to the remote system will be transmitted bandwidth optimized and audio will be available at the workstation.

1.4 Important Notes

To use the VENICE View software correctly, please heed the following:



For the display of the video channels, the latest Spycer application by R&S DVS must be installed as well (see the “VENICE Software” user guide for further information).

NOTICE

Missing Spycer licenses

If the VENICE View software is installed on a remote system with only basic Spycer licenses, the data streamed to the remote system will not be bandwidth optimized and audio will not be available.

The Spycer application running on the remote system should be fully licensed.

NOTICE

Running several applications in parallel on Mac OS

Running several applications at the same time on Mac systems may cause system instability or crashes.

On Mac systems do not run the VENICE View software and the VENICE software on the same system, at the same time.



Basics

Contents

Installation	2-2
Notes about Spycer	2-2
Installing under Linux	2-3
Installing under Mac OS	2-3
Installing under Windows	2-4
Starting the Program	2-5
Starting the Software under Linux	2-5
Starting the Software under Mac OS	2-5
Starting the Software under Windows	2-6
Overview	2-7
Overview of the Main Window	2-7
Overview of a Channel Widget	2-8
Exiting the Program	2-10



2.1 Installation

This section describes how to install the VENICE View software. The installation will be described for each supported operating system separately. For additional information about the server setup and further configurations see the “R&S®VENICE Software” user guide.

2.1.1 Notes about Spycer

The VENICE View software receives the streamed data from the content control software Spycer. To work with VENICE View, you must install the latest Spycer application by R&S DVS. Additionally, Spycer must be licensed for VENICE View.

After its installation the Spycer application has to be configured appropriately so that it can connect to the Spycer software on the SpycerNet:



For information about how to install Spycer as well as its configurations see the “Spycer” user guide.

The VENICE View software will not start when the Spycer license has not been updated. You will receive an error message on your screen with a license issue and the program will terminate. To update your Spycer license perform the following:

1. Start your Spycer software and select from the **Tools** menu the entry **License Management** and then **File request**.

This will generate a license request which will be send to the R&S DVS service department. After a short time you will receive an e-mail with the license key in a text file. To update the Spycer license, perform the following:

2. Save the text file with the license key on your desktop.
3. Start your Spycer software and select from the **Tools** menu the entry **License Management** and then **File update**.
4. A directory and disk window will appear where you have to browse to your text file with the license key. Usually the desktop is selected automatically.
5. Select the text file and press the button **OPEN**.

A message will appear on your screen with the information that the license key from your text file has been added.

6. Press the button **OK**.

Now you can install the VENICE View software.

2.1.2 Installing under Linux

The installation routine of the VENICE View software for a Linux operating system is a single RPM package file. To download the software, please contact the R&S DVS service department.

To install the VENICE View software on a Linux operating system, perform the following:

1. If applicable, open a command line (terminal) and log on to the system as root.
2. Switch to the directory that contains the installation file of the VENICE View software for the current operating system.
3. Then install the VENICE View software by entering, for example:

```
rpm -ihv VENICE_View<version no.>_<kernel/OS architecture>.rpm
```

This installs all necessary files and libraries of the R&S DVS software on the computer system. Afterwards the installation of the software is complete and it can be started at any time with a normal (not root user) user account.



The R&S DVS software can be deinstalled by entering `rpm -e VENICE_View` in a command line.

2.1.3 Installing under Mac OS

The VENICE View software for Mac OS is available in a single disk image file. To download the software, please contact the R&S DVS service department.

To install the VENICE View software on a Mac OS, perform the following:

1. Open a file manager on the computer system (e.g. Finder).
2. Switch to the directory that contains the installation file of the VENICE View software for the current operating system.
3. Open the installation file of the R&S DVS software which will mount it as a volume (VENICE_View-<version no.>.dmg, e.g. with a double-click of the mouse).
4. From this volume install the R&S DVS software, for example, by dragging the `VENICE_View.app` file into the *Applications* folder on the sidebar of the finder.

This installs all necessary files and libraries of the R&S DVS software on the computer system. Afterwards the installation of the software is complete and it can be started at any time with a normal user account.



The R&S DVS software can be deinstalled by deleting the *VENICE_View.app* entry from the *Applications* folder.

2.1.4 Installing under Windows

The installation routine of the VENICE View software for the Windows operating system is a single executable file. To download the software, please contact the R&S DVS service department.

To install the VENICE View software on a Windows system, perform the following:

1. Open a file manager on the computer system (e.g. Windows Explorer).
2. Switch to the directory that contains the installation file of the VENICE View software for the current operating system.
3. Execute the installation file of the VENICE View software (*Install_VENICE_View-<version no.>.exe*), for example, with a double-click of the mouse.

This starts the installation routine which will guide you through the installation.

4. Follow the instructions given on the screen.

During the installation procedure all necessary files and libraries will be installed on the computer system. The installation will be finished as soon as a message reports this.

With this the installation of the software is complete and it can be started at any time.



The R&S DVS software can be deinstalled via **Programs and Features** of the control panel of Windows. Search for the entry 'VENICE View <product no.>'.

2.2 Starting the Software

This section provides you with a description how to start the VENICE View software. It is also possible to run several instances of the software in parallel, for example, to have them side by side on the screen. Starting the program will be described for each supported operating system separately.

2.2.1 Starting the Software under Linux

To start the software under the Linux operating system perform the following:

- Select from the **Applications** menu of Linux the entry **Sound & Video » VENICE View**.
- Alternatively, you may also start the program from a command line (terminal) by entering
`./opt/DVS/VeniceView/bin/view`

This will load the VENICE View software by R&S DVS and you can start working with it (see section “Overview” on page 2-7).

2.2.2 Starting the Software under Mac OS

To start the software under Mac OS perform the following:

NOTICE

Overload due to several applications

Running several applications at the same time on Mac systems may cause system instability.

On Mac systems do not run the VENICE View software and the VENICE software on the same system and at the same time.

- Select from the *Applications* folder of Mac OS the entry *VENICE_View.app*.

This will load the VENICE View software by R&S DVS and you can start working with it (see section “Overview” on page 2-7).



2.2.3 Starting the Software under Windows

To start the software under the Windows operating system perform the following:

- Select from the **START** button menu of Windows on the submenu **R&S DVS** the entry for the R&S DVS software (for example, **All Programs » R&S DVS » VENICE View**).
- Alternatively, you may also start the program via the VENICE View icon available on the desktop of Windows.

This will load the VENICE View software by R&S DVS and you can start working with it (see section "Overview" on page 2-7).

2.3 Overview

This section facilitates a first overall view of the VENICE View software. It describes the main window and where you can find the most important buttons. Furthermore, it provides a detailed description of the channel widget.

2.3.1 Overview of the Main Window

Right after starting the software (see section “Starting the Software” on page 2-5) the user interface of the application will be displayed. In its default settings it shows all connected video channels of all VENICE servers that can be found in the network by Spycer:

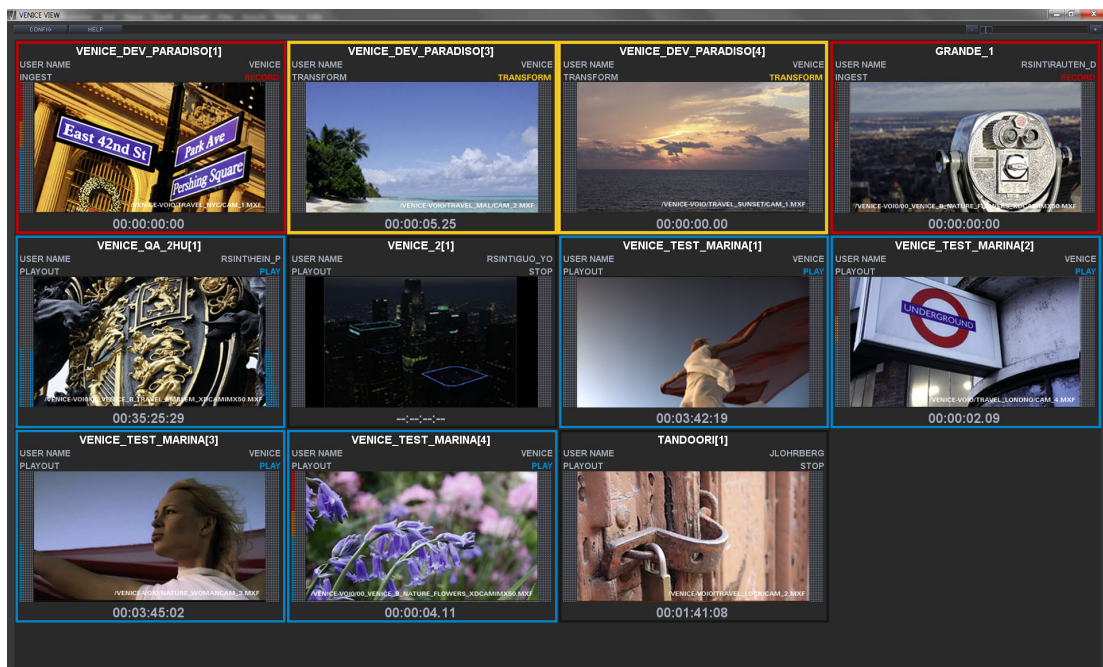


Figure 2-1: Overview of the VENICE View main window



The main window is composed of the channel widgets, the **CONFIG** and **HELP** buttons as well as a slider with the buttons (-) and (+) to the top right.

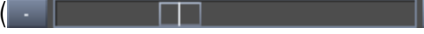


In its factory default settings the VENICE View software displays the main window without the title bar and therefore without its buttons for maximizing, minimizing and closing the main window. You can enable the title bar by pressing [F11] (or [F7] on Mac OS).



The channel widgets provide the surface on which the channels are displayed and where the labelings and peakmeters are located (see section “Overview of a Channel Widget” on page 2-8).

In the top left corner, right under the title bar the button **CONFIG** is to be found () which opens a dialog window for the configurations of the channel display (see section “Configuring the Display” on page 3-4). When selecting the button **HELP** () next to the **CONFIG** button, a further window opens up where you find information about shortcuts and the button **OPEN MANUAL** that opens the manual.

In the top right corner, right under the title bar you find a slider and two buttons () which define the size and number of the channel widgets displayed (see section “General Usage” on page 3-2).

2.3.2 Overview of a Channel Widget

The channel widget displays the content of a connected channel:

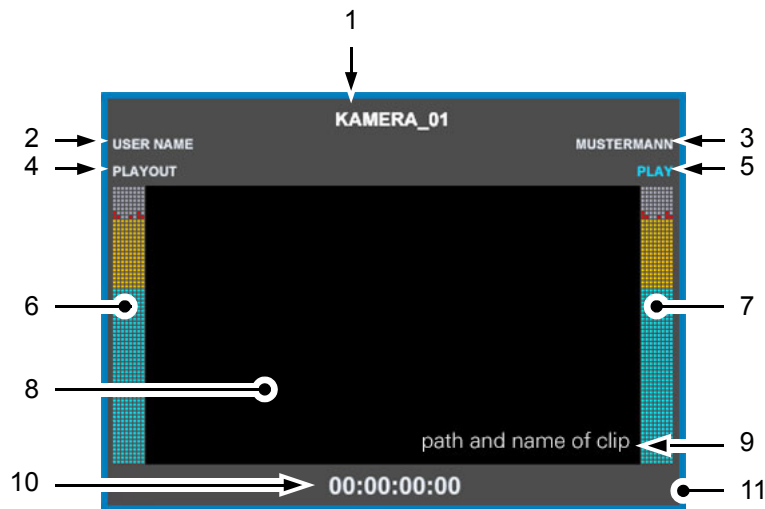



Figure 2-2: VENICE channel widget

1	channel name	actual channel name  The channel name can be changed in the VENICE software in the 'File' menu, see the “R&S®VENICE Software” user guide for further information.
2	static label	static label that does not change, displaying USER NAME
3	user name	name of the actual user, displays UNKNOWN when channel not connected

4	operation mode	actual operating mode, can be PLAYOUT, IN USE, INGEST, OFFLINE, FREE
5	status	actual status, indicates a MASTER or SLAVE status, the PLAY status in blue, RECORD in red, TRANSFORM in yellow, STOP in light grey and displays operating modes FREE and OFFLINE with three dashes
6	peakmeter 1-8	peakmeter for audio channels 1-8
7	peakmeter 9-16	peakmeter for audio channels 9-16
8	surface	surface for video display, in size 16:9 with black background color
9	clip path and name	Path and name of the clip that is currently shown in the video overlay. In case the clip is an audio file, the audio file's name will be shown here.
10	timecode display	timeline timecode, provided when in PLAYOUT, RECORD and TRANSFORM mode
11	operation mode frame	The channel's operation modes are indicated by frames in color red (ingest mode), blue (playout mode) and yellow (transform mode). The channel widgets have no frame when the status is STOP.


Only for the R&S®VENICE Play software

The channel widgets in VENICE View show the color(s) of the video channel group(s) that have been created in the VENICE Play software (see the "R&S®VENICE Play" software user guide).



2.4 Exiting the Program

To end the R&S DVS VENICE View software and exit it, use either one of the following possibilities:

	The close button of the tool bar on the main window closes the VENICE View software program.
[command + Q]	Press this key on your Mac OS keyboard to close the program.
[Alt + F4]	This keyboard combination closes the VENICE View software program on most operating systems as well.

After this the VENICE View software program is exited and closed. The background command line window displayed under Windows will be closed as well.



Configurations that haven't been saved as a preset or similar will be lost when you close the VENICE View software. The next time you use the application, it will start with its predefined default settings.



Usage

Contents

General Usage	3-2
Configuring the Display	3-4
The Configuration Dialog Window	3-4
Configuration Options: Auto	3-5
Configuration Options: Customized	3-5
Keyboard Shortcuts	3-10



3.1 General Usage

The VENICE View software gives you the opportunity to display as many video channels as possible in an overall view. All connected channels in the network are displayed in channel widgets. The program offers you many possibilities to configure the display according to your purposes.

After starting the software (see section “Starting the Software” on page 2-5), the main window opens with its default factory settings. The main window is displayed without its title bar and in full desktop filling size. The application shows all connected video channels of all VENICE servers that can be found in the network via Spycer in four channel widgets in size 16:9 in each row:

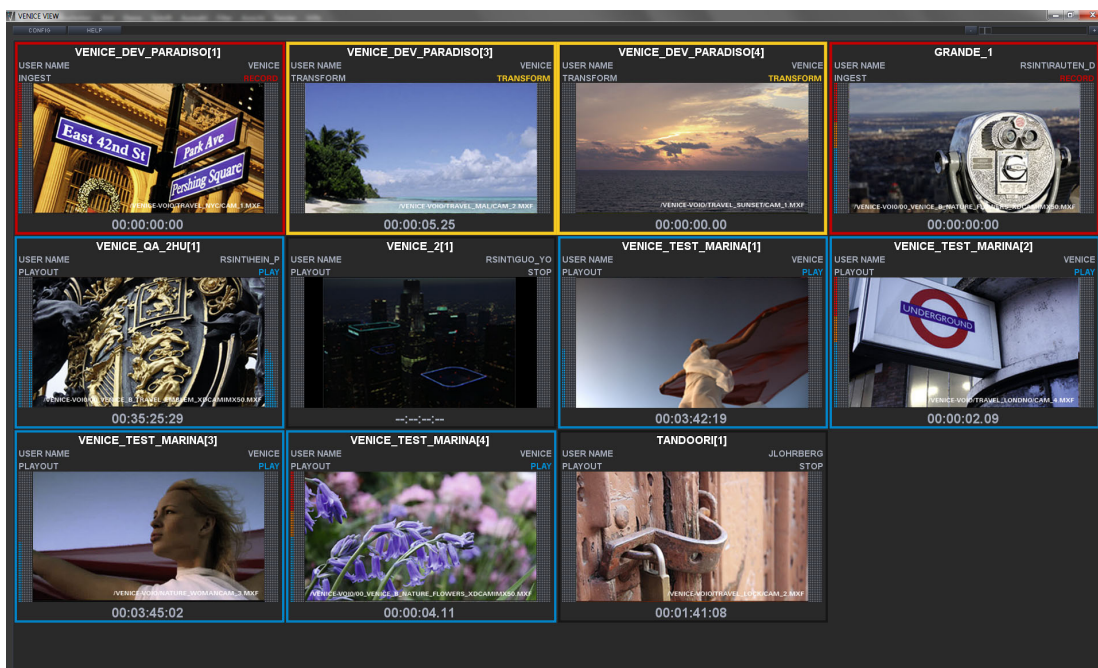


Figure 3-1: Main window with channel widgets

The title bar can be enabled by pressing [F11] (on Mac OS [F6]) on the keyboard. A display with or without its configuration menu and slider can be gained by pressing [F12] (on Mac OS [F7]) on the keyboard.



The VENICE View software is a multi viewer that gives you the best overall view of all of the connected channels. It is recommended to use the application in full screen without title bar and menu. You can enable the full-screen mode by pressing [F11] or [F7] on Mac OS.

The number and size of the displayed channel widgets can be configured easily. Use the slider or the two buttons in the top right corner of the main window (see section “Overview” on page 2-7) to define the size of the channel widgets in relation to their count in each row.



Figure 3-2: Slider with buttons

You can define a number of two up to five channel widgets in each row. The size will be enlarged or reduced automatically.

NOTICE

Channel overload

A high processor usage due to a high number of displayed channels might lead to disrupted displays.

It is recommended to limit the count of the displayed channels to a useful number.



All changes that are made in the VENICE software like e.g. moves in the timeline are updated by the VENICE View software and displayed automatically. For further information see the “R&S®VENICE Software” user guide.



3.2 Configuring the Display

This section provides all information you need to configure the display of the video channels in the VENICE View software. It gives you explanations to the auto and customized settings, the table settings and illustrates the possibilities to save the configuration as presets or as customized defaults.

3.2.1 The Configuration Dialog Window

In the top left corner of the main window (see section “Overview” on page 2-7) the button **CONFIG** can be found. It gives you the possibility to set configurations for the display of the channels, to add or delete channels and to save your settings as presets.

When you click on the button **CONFIG** () , a dialog window opens up in the middle of the main window.

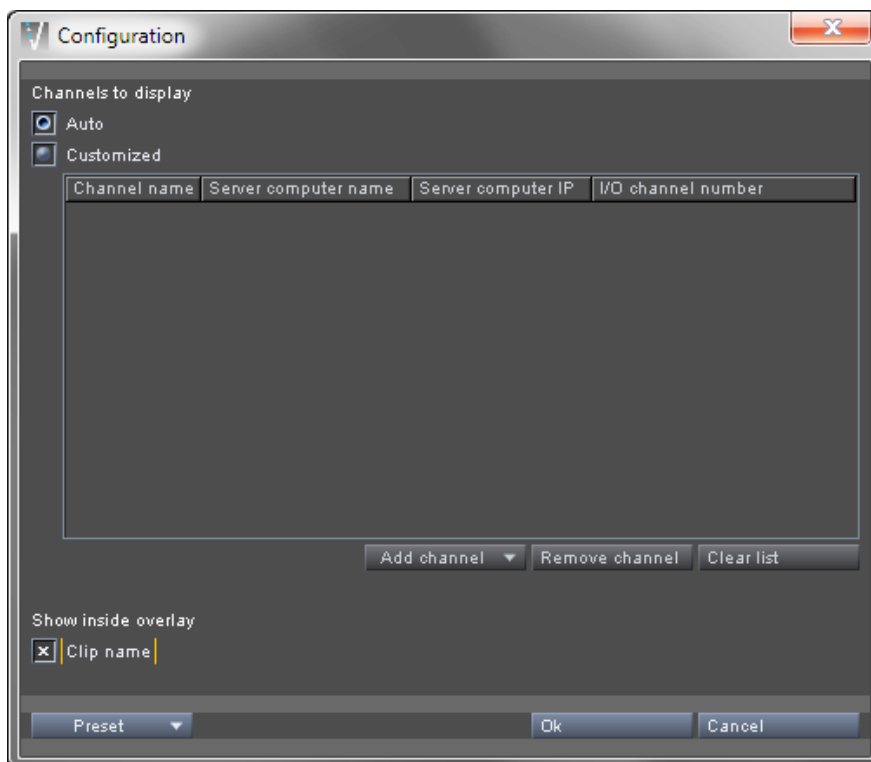


Figure 3-3: Configuration dialog window

In the category **Channels to display** you find the settings which define the display of the channel widgets in the main window of the VENICE View software. There are two options: **Auto** and **Customized**.

In the middle of the configuration dialog window the table for the video channels is located. Below that you find the drop-down list **Add channel** and the buttons **REMOVE CHANNEL** and **CLEAR LIST**.

In the bottom field of the window you find the drop-down list **Preset** as well as the buttons **OK** and **CANCEL**.

3.2.2 Configuration Options: Auto

When selecting the option **Auto** in the configuration dialog (see section “The Configuration Dialog Window” on page 3-4), all connected channels are displayed. The channels in the operating modes FREE or OFFLINE do not appear in the main window. The display in the VENICE View software constantly updates automatically. As soon as a channel has been connected, it is displayed in an additional channel widget in the main window.

When a channel switches into the operation modes OFFLINE or FREE, it will be removed from the display in the channel widget and thus also from the display in the main window (see section “Overview” on page 2-7).



In large networks it is recommended to set precise configurations for the display of the channels due to higher network traffic and thus a permanent fade-in/out of channel widgets in the main window.

When the configuration options are set to **Auto**, all other items in the dialog window are disabled. To confirm your settings, press the button **OK**, otherwise press **CANCEL**.

3.2.3 Configuration Options: Customized

When selecting the option **Customized** in the configuration dialog (see section “The Configuration Dialog Window” on page 3-4), the table below it and all other elements are enabled in the window. The order of the channels in the table corresponds to the order of the channel widgets in the main window.

The table displays the channel name, the server computer name, the server computer IP address and the I/O channel number. To the left of the channel name you find the channel's number in the table.

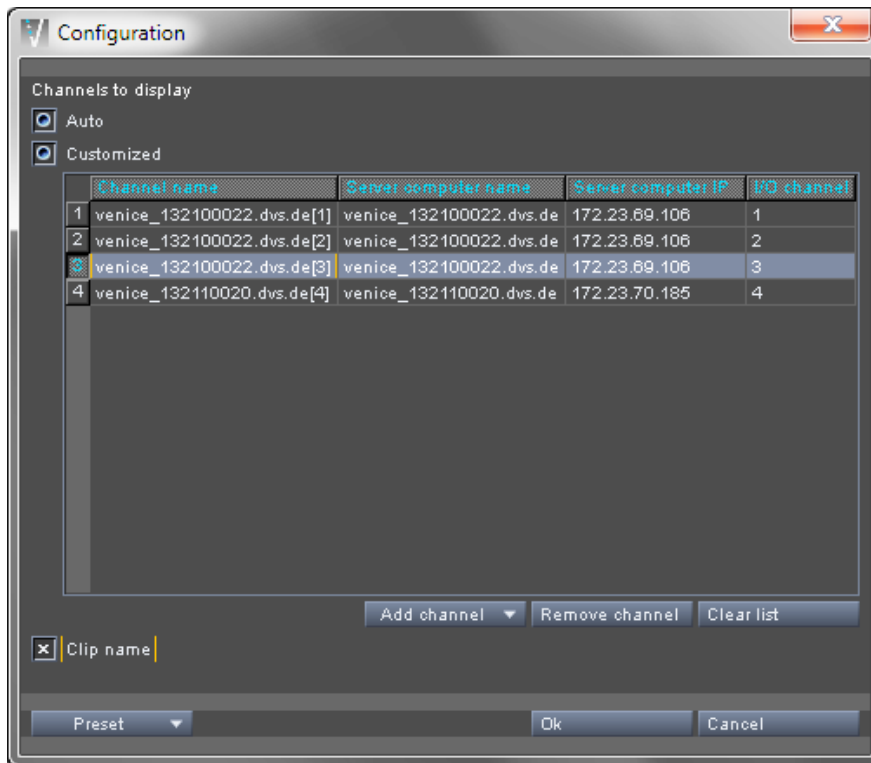


Figure 3-4: Table with selected and deselected channels

Selecting a channel can be carried out by clicking on it or on the channel's number in the table, to the left side of the channel name. The headers in the title bar of the table will be displayed in cyan and the selected channel appears highlighted in a light grey-blue.

Multi selection is also allowed by clicking on each channel to be selected or by clicking on a channel and moving the pressed mouse pointer over the following channels to be selected.

Deselecting is possible by clicking once again, on an already selected channel or on the channel's number in the table, to the left side of the channel name. The deselected channel will be put back to its dark grey background color again.

To confirm your settings press the button **OK**, otherwise press **CANCEL**.

Table Settings

Below the table, in the configuration dialog (see section “The Configuration Dialog Window” on page 3-4) are the table settings to be found. There are the three items: **Add channel**, **REMOVE CHANNEL** and **CLEAR LIST**:

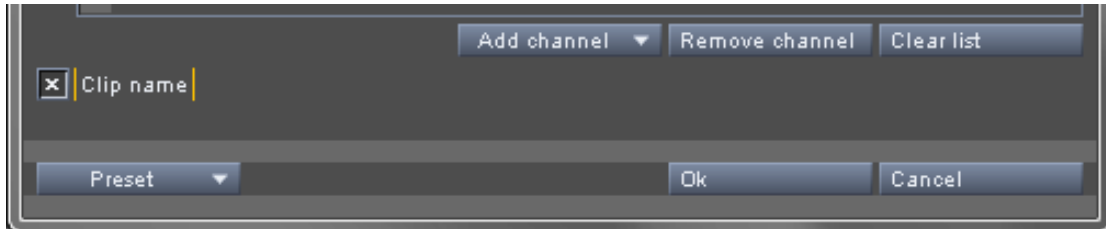


Figure 3-5: Table settings

With the drop-down list **Add channel** it is possible to add further channels to the table which will then be displayed in a channel widget in the main window.

When clicking the down arrow, a selective list appears where all connected VENICE channels in the network are presented incl. their current operation mode and status (see section “Overview of a Channel Widget” on page 2-8). These are the same channels which are listed in the VENICE software, when clicking into the tab **ALL CHANNELS**. Directly after clicking on a channel in the selective list, the channel is added to the table above.

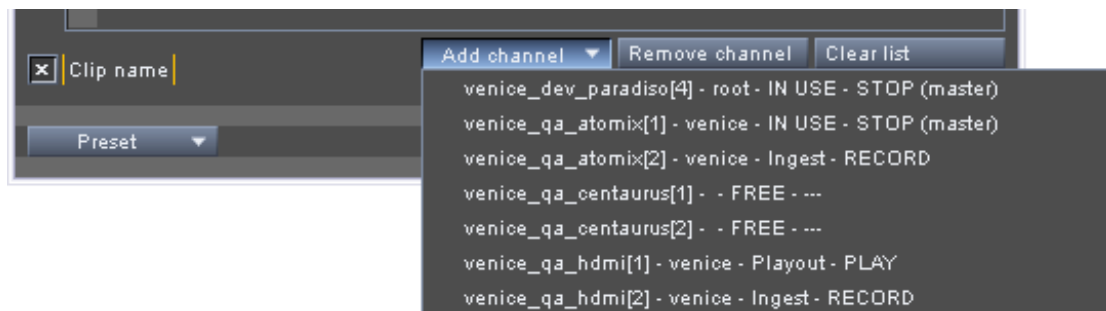


Figure 3-6: Adding a channel to the table

To remove one or several channels it is necessary to select the requested channels in the table first (see section “Configuration Options: Customized” on page 3-5). By clicking the button **REMOVE CHANNEL**, only the selected channels are deleted from the table. Selected channels can be removed by pressing the key [Delete] on your keyboard, too.

The button **CLEAR LIST** deletes all, selected and unselected channels in the table.



The VENICE View software will not ask you to confirm to clear the list. If you push the button **CLEAR LIST** unintentionally, simply press **CANCEL**.

To confirm your settings press the button **OK**, otherwise press **CANCEL**.

Presets

The configuration dialog (see section “The Configuration Dialog Window” on page 3-4) offers you the drop-down list **Preset** that allows you to save the current configurations as presets or as customized default settings. Configurations that can be made include e.g. the size and number of channels in a row, the channel names to be displayed or the size of the main window.

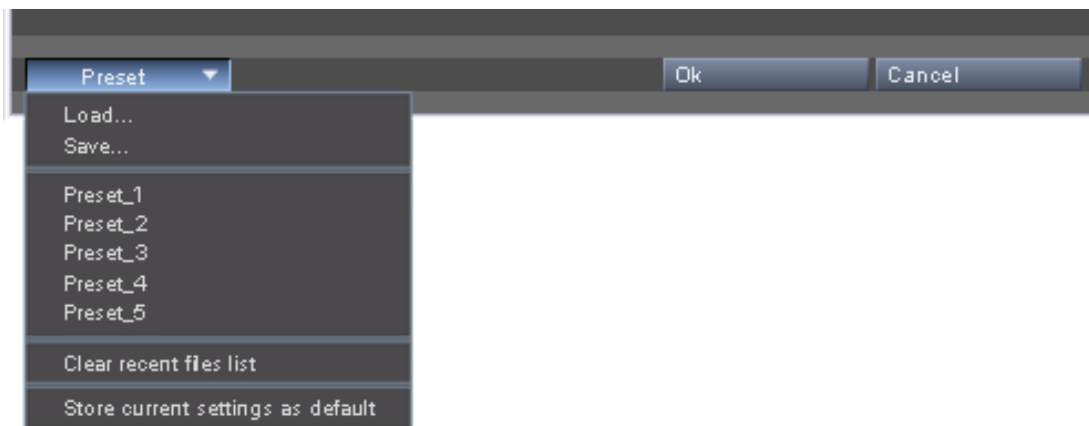


Figure 3-7: Options of the preset drop-down list

For this purpose the drop-down list includes the options **Load**, **Save**, **Clear recent files list**, **Store current settings as default** and a listing of the last ten saved settings.

When clicking on the option **Load**, a directory and disk window appears where you can select a previously saved preset or default setting under your stored data files.

The option **Save** saves the last setting that was made. You can save the configuration in the requested storage location via a directory window.

When clicking on **Clear recent files list**, the listing of the last ten saved settings will be removed. As soon as you save a configuration as a preset, this will be displayed in the list as the last saved setting the next time you use the VENICE View software again.

The option **Store current settings as default** offers you the possibility to save a certain configuration and to set it automatically as a customized default setting. The next time you use the VENICE View software it will be adopted and displayed automatically.



Configurations that haven't been saved as a preset or similar, will be lost when you close the VENICE View software. The next time you use the application, it will start with its predefined default settings.

To confirm your settings press the button **OK**, otherwise press **CANCEL**.



3.3 Keyboard Shortcuts

For an easier and a faster control of the VENICE View software there are various keyboard shortcuts available which are listed in the table below:

Table 3-1: General keyboard shortcuts

Action	Shortcut
Opens the about dialog	[Ctrl + A]
Opens the configuration dialog	[F4]
Increases widget	[Ctrl + plus]
Decreases widget	[Ctrl + minus]
Closes the program	[Ctrl + F4]
Opens the help dialog	[F1], on Mac OS [command + ?]
Refreshes the display	[F5]
Switches to full screen mode	[F11], on Mac OS [F6]
Enables the options frame	[F12], on Mac OS [F7]
Closes the application on Mac OS	[command + Q]

Index

A

audio peakmeters2-9

C

channel widget

channel name2-8

clip path and name2-9

configuration3-3

operation mode2-9

operation mode frame2-9

overview2-8

timecode display2-9

clip path and name2-9

command line window2-10

configuration dialog window3-4

configuration options

auto3-5

customized3-5

presets3-8

table settings3-7

conventions

command descriptions1-4

of user guide1-2

screenshots1-4

D

display

configuration3-4

size2-9

surface2-9

E

enabling title bar2-7

exiting the program2-10

external device (RS-422)1-1

G

general usage3-2

I

important notes1-6

installation

under Linux2-3

under Mac2-3

under Windows2-4

installing the software2-2

instances of the software1-1, 2-5

instructions

starting under Linux2-5

starting under Mac2-5

starting under Windows2-6

K

keyboard shortcuts3-10

L

license (Spycer)1-5

update2-2

license issue2-2

M

main window

configurations2-8

overview2-7

main window of the software2-7

N

notes1-6

Spycer1-6, 2-2

O

operating system1-5

operation mode2-9

operation mode frame2-9

**P**

program start	2-5
under Linux	2-5
under Mac	2-5
under Windows	2-6

S

Spycer	1-5, 2-2
license	1-5
license update	2-2
notes	1-6, 2-2
starting of program	2-5
under Linux	2-5
under Mac	2-5
under Windows	2-6
system requirements	1-5

T

target group	1-2
timecode	2-9

timecode display	2-9
typographical conventions	1-2

U

uninstalling	2-4
usage	3-1

V

VENICE	1-1
VENICE Play	2-9
video channel group display	2-9
VENICE server system	1-1, 1-2
VENICE software	1-1
VENICE View software	
exiting	2-10
installation	2-2
introduction	1-1
license issue	2-2
overview	2-7
start	2-5
video channel groups	2-9